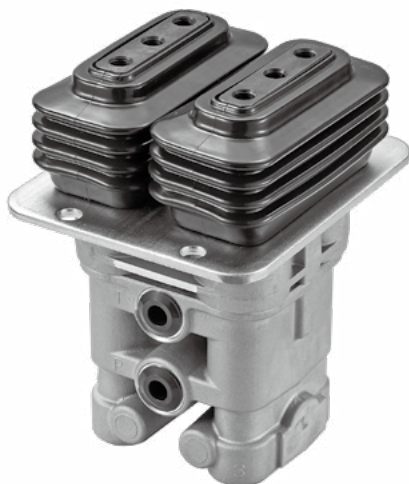




2.4

PILOT CONTROL DEVICE IN PEDAL DESIGN

Type: PVH



Contents

	Page
Features	03
Function description, section view	04
Technical data	04
PVH1	
· Hydraulic operating diagram	05
· Ordering code	05
· Control curves	06
· Unit dimensions	07
PVH2	
· Hydraulic operating diagram	08
· Ordering code	09
· Control curves	09
· Unit dimensions	10

Features

1. Function:

- Precise linear control
- Perfect adjustment characteristic
- Easy and flexible operation
- Built-in buffering
- Ergonomic shape
- Diverse modular design
- Reliable dustproof and waterproof performance

2. Applications



Excavator



Tractor loader backhoes



Wheel loaders



Drilling rigs

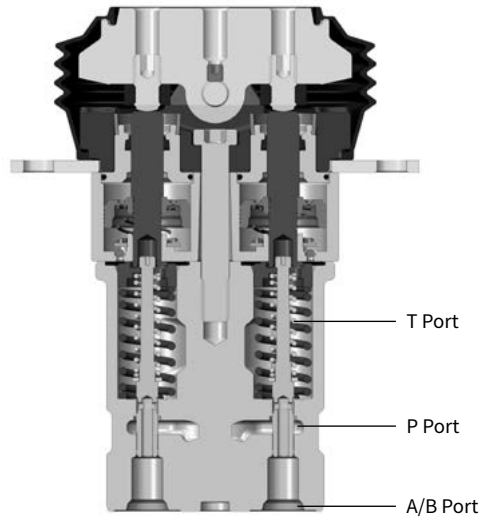
Function description, section view

· Working principle of proportional pressure reducing function:

The hydraulic pressure acting on the lower end of the spool (A/B port) can reach a dynamic balance with the force of the pressure regulating spring to achieve a proportional pressure reducing function.

· Working principle of buffer function:

When a force suddenly works on the pedal, the steel ball inside the buffer will seal the oil return port, thus the hydraulic oil can only flow from the orifice into the upper chamber. With this kind of design, the operation force can be increased and also the manual misoperation for travelling due to bumps can be effectively reduced and finally realizes a buffer function.

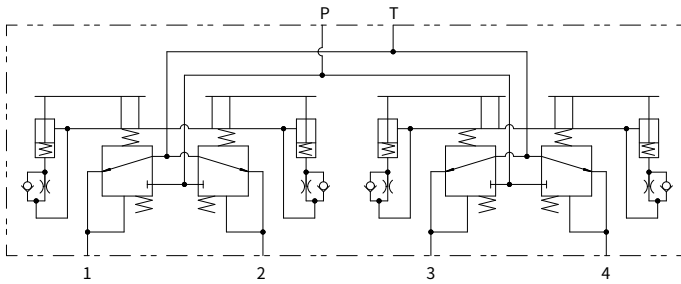


Technical data

Type		PVH1	PVH2
Inlet pressure	bar	Up to 60	
Back pressure at port T	bar	Up to 3	
Control fluid flow (P to 1-2)	L/min	Up to 20	
Hysteresis	bar	Up to 1	
Pressure fluid	¹⁾ suitable for NBR seals ²⁾ suitable for FKM seals	Mineral oil (HL, HLP) ¹⁾ to DIN 51524 Phosphate ester (HFD-R) ²⁾	
Pressure fluid temperature range	°C	-20 to +80	
Viscosity range	cSt	10 to 380	
Degree of pressure fluid contamination		Maximum permissible degree of contamination of the pressure. Maximum permissible degree of contamination of the pressure. Fluid is to NAS 1638 Class 9. We, therefore, recommend a filter with a minimum retention rate of $\beta_{10} \geq 75$ fluid is to NAS 1638 Class 9. We, therefore, recommend a filter with a minimum retention rate of $\beta_{10} \geq 75$.	
Max. permissible operating torque at lever	Nm	10 in operation	
Weight	kg	3.8	1.5

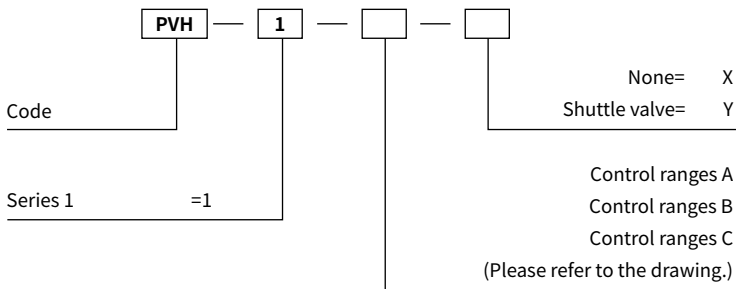
Hydraulic operating diagram

• PVH1



Ordering code

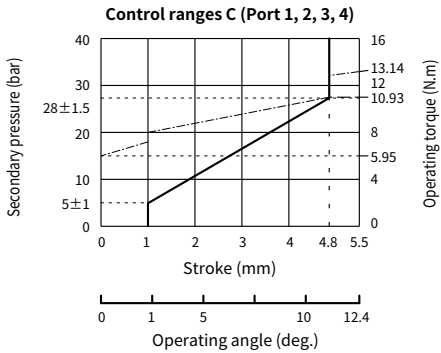
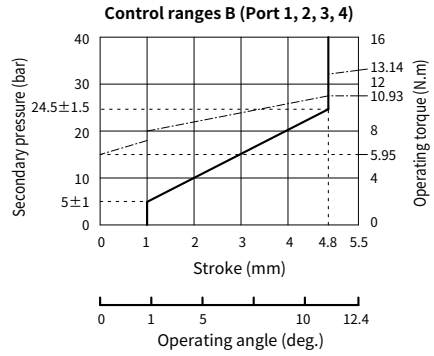
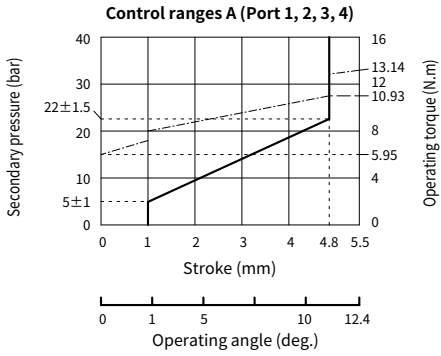
• PVH1



02

Control curves

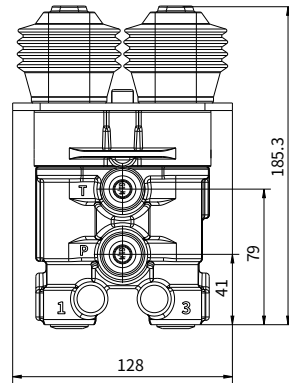
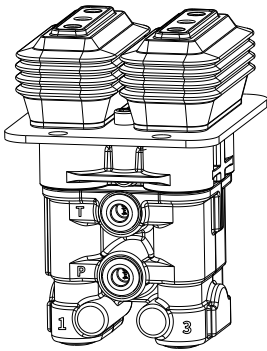
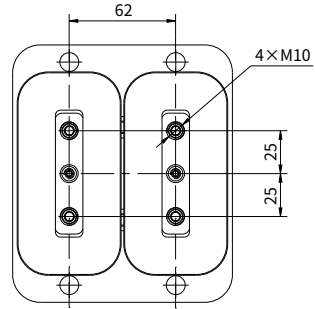
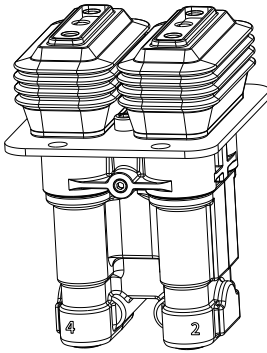
• PVH1



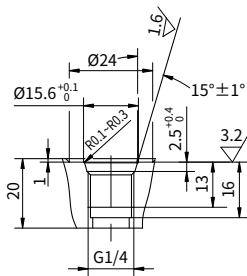
Unit dimensions

(dimensions in mm)

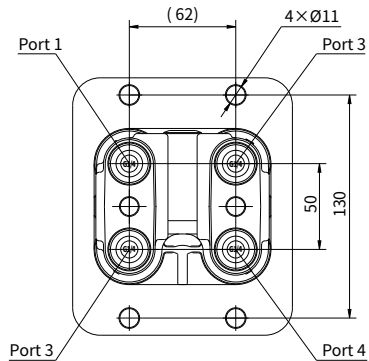
• PVH1



3D Reference Picture



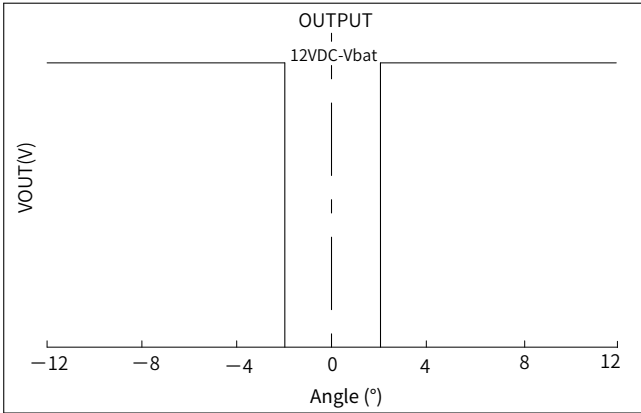
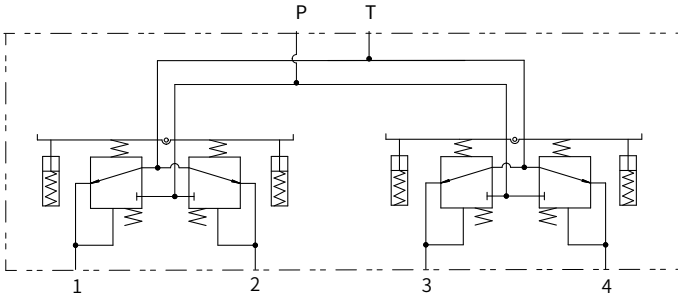
Port: P, T, 1, 2, 3, 4



02

Hydraulic operating diagram

• PVH2



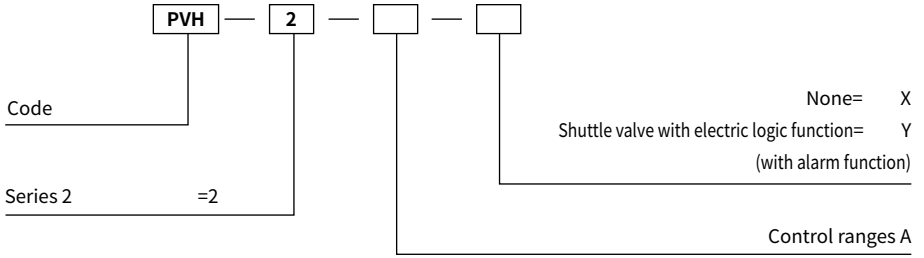
Electrical parameters

1. Rated voltage: 12VDC

2. Maximum current: 1500mA

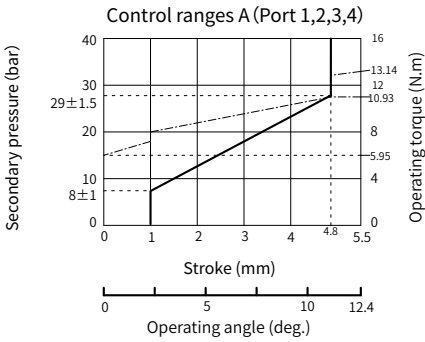
Ordering code

• PVH2



Control curves

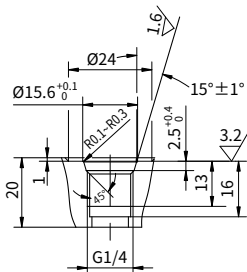
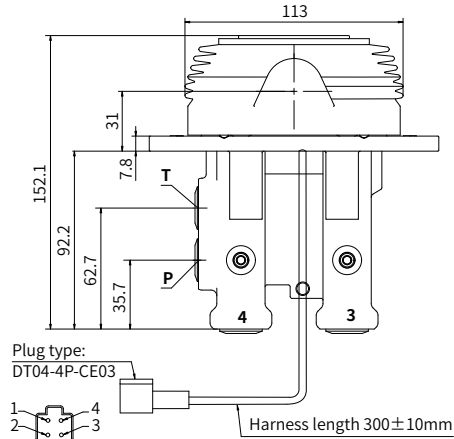
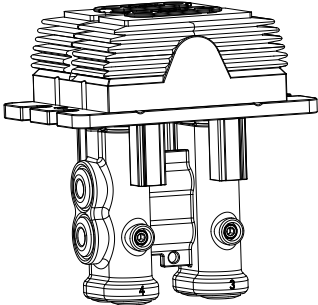
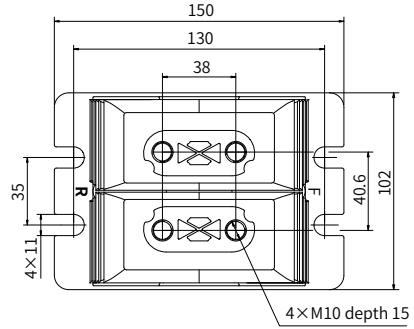
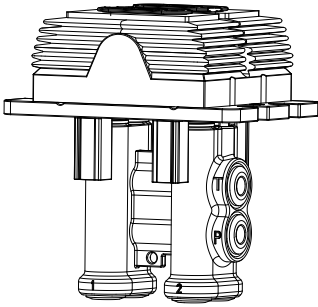
• PVH2



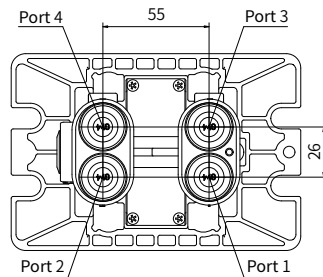
Unit dimensions

(dimensions in mm)

• PVH2



Port: P, T, 1, 2, 3, 4



China +86 400 101 8889	America +01 630 995 3674
----------------------------------	------------------------------------

Germany +49 (30) 72088-0	Japan +81 03 6809 1696
------------------------------------	----------------------------------



© This brochure can be reproduced, edited, reproduced or transmitted electronically without the authorization of Hengli Hydraulic Company. Due to the continuous development of the product, the information in this brochure is not specific to the specific conditions or applicability of the industry, thus, Hengli does not take any responsibility for any incomplete or inaccurate description.