



1.2

EHV SERIES

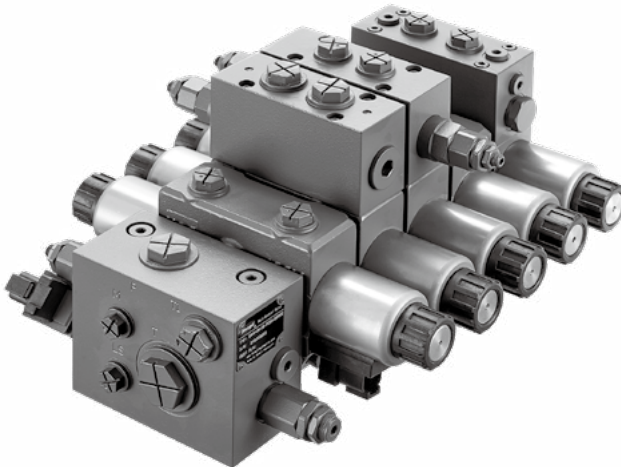
FLOW SHARING VALVE

EHV:

Nominal size:	06
Rated pressure(bar):	310
Rated flow(L/min):	60

Benefits:

- High efficiency
- Less volume, lighter weight
- Precise controllability
- Low pressure drop, less fuel consumption
- Quick response



Contents

	Page
Features	03
Section view	04
Technical data	05
Ordering code	06-07
Hydraulic diagram	08
Inlet section assembly	
· Inlet section assembly	09
· Inlet section assembly-with LS solenoid operated unloading valve	10
Middle section assembly	
· Middle section assembly	11
· Middle section assembly-With relief valve	12
· Middle section assembly-With hydraulic operated check valve	13
Endlet section assembly	14
Unit dimensions	15

Features

1. System:

Flow pressure independent flow distribution

Open center, for fixed displacement pump

Closed center, for load-sensing variable displacement pump

- Priority function
- Less control pressure, $\Delta P=15\text{bar}$
- Each movements priorities adjustable
- Electrical switch and electrical proportional control

2. Structure

- Sandwich plate of design
- Max. 10 middle section

3. Pressure

- Primary and secondary pressure relief valve
- LS pressure relief valve

4.Flow

- Load pressure compensated
- High repeatability accuracy
- Low hysteresis
- Quick response

5. Applications



Aerial work platform



Agricultural machinery



Cranes

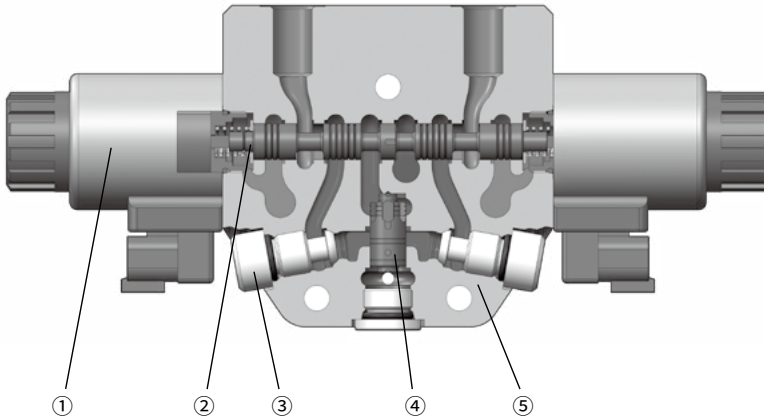


Telescopic handler



Wet spraying machine
(concrete machinery)

Section view



- | | |
|---------------------|----------------------|
| 1. Solenoid | 2. Main spool |
| 3. Load check valve | 4. Compensator valve |
| 5. Valve block | |

Technical data

General

Structure	Stackable, load sensing, post pressure compensated		
Type of connection	ISO BSP thread, metric thread		
Mass (kg)	Inlet element		4.27/5.3
	Middle section	General	3.50
		With relief valve	5.58
		With hydraulic operated check valve	4.86
End element		0.27	

Hydraulic

Nominal size		06
Rated flow	Q (L/min)	60
	P/LS (bar)	310
Rated operating pressure at port	A/B (bar)	310

Electric

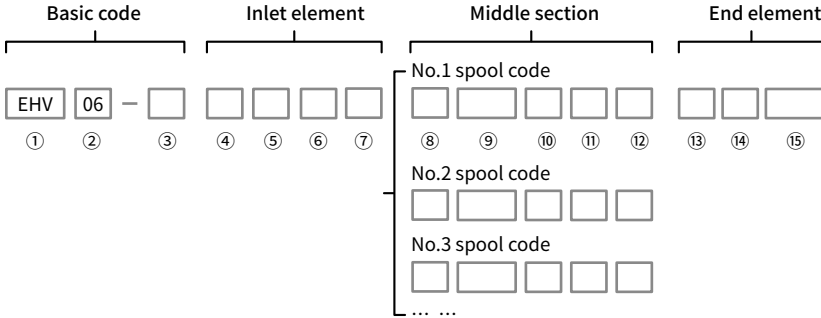
Electrical on/off: · Connection: Deutsch DT04-2P · Protection class: IP69k · Supply voltage: 12 or 24VDC	Electrical proportional: · Dither frequency required: 120Hz · Hysteresis: Less than 3% · Connection: Deutsch DT04-2P · Protection class: IP69k · Control current @12VDC: 0~1800mA, @24VDC: 0~1200mA
---	--

Using environment

Hydraulic fluid	Mineral oil (HL, HLP) according to DIN 51524. Other hydraulic fluids, such as HEES (Synthetic Ester) according to VDMA 24568.
Hydraulic fluid temperature range(°C)	-20 ~ +80
Viscosity range ν (mm ² /s)	10 ~ 380
Maximum permissible degree of contamination of the pressure fluid cleanliness class to ISO 4406 (C)	Class 20/18/15, we therefore recommend a filter with a minimum retention rate of $\beta_{10} \geq 70$

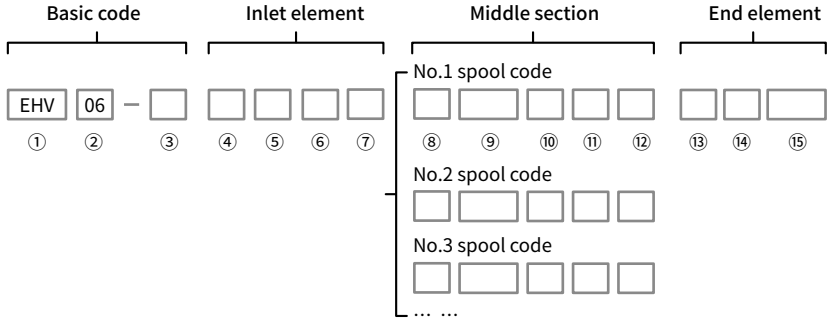
(For applications outside above mentioned parameters, please consult our sales dept.)

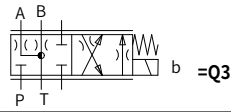
Ordering code



Basic code	① Structure	EHV	Stackable, load sensing, post pressure compensated
	② Nominal size	06	
	③ Number of blocks	..	01~10
Inlet element	④ Circuit types	C	Closed center, for variable piston pump system
		O	Open center, for fixed displacement pump system
	⑤ Main relief valve	Q	Without main pressure relief valve
		P...	With main pressure relief valve, (pressure in bar, 3-digits)
	⑥ LS relief valve	Q	Inlet element without LS pressure relief valve (LS relief valve plug)
	S...	Inlet element with LS pressure relief valve (pressure in bar, 3-digits)	
⑦ LS unload		LZ	Without LS unload function
		LA	With LS unload function: normal open
		LB	With LS unload function: normal close
Middle section	⑧ Spool symbol	E1	=E1
		E2	=E2
		E3	=E3
		Q1	=Q1
		Q2	=Q2

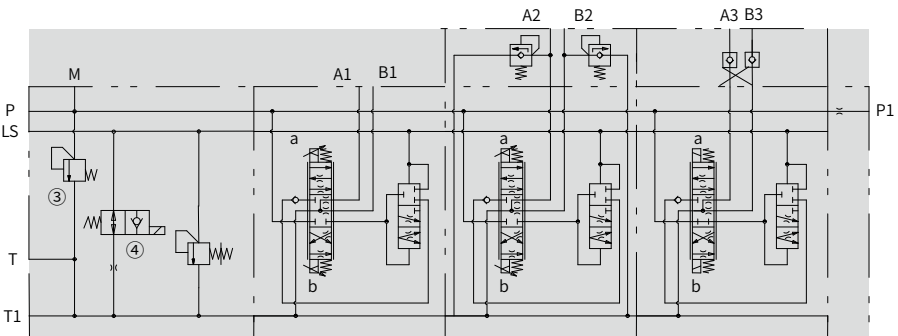
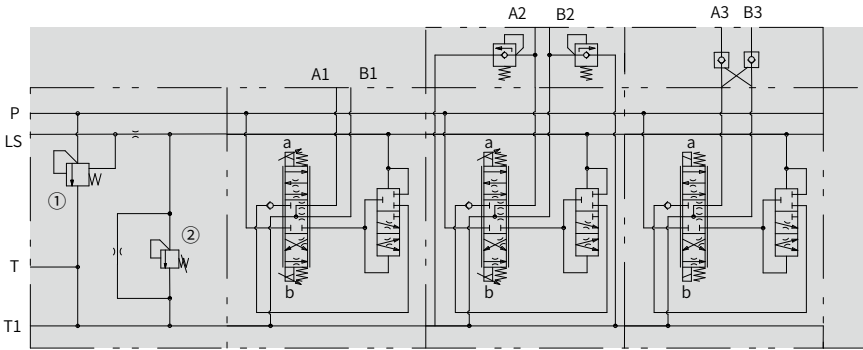
Ordering code



Middle section	⑧ Spool symbol	Q3	
	⑨ A/B flow	..—..	Flow in l/min, 2-digits, e.g. 50-50
	⑩ Operator type	W21	Electrical proportional control, 24V
		W23	Electrical proportional control, 12V
		W41	Electrical switch control, 24V
	⑪ A/B port relief valve	W43	Electrical switch control, 12V
		Blank	Without port relief valve
		QQ	Plug, without relief valve (port relief valve can be added)
	⑫ AB hydraulic operated check valve	G...G...	G200G200, pressure in bar, pressure details of port relief valve in 3 digits
		OO	Without hydraulic operated check valve
AB		The AB port has a hydraulic operated check valve	
AO		Only A port has a hydraulic operated check valve	
End element	⑬ Additional P port	OB	Only B port has a hydraulic operated check valve
		Blank	Without additional P port
Others	⑭ Sealing type	P	With additional P port
		V	FKM
	⑮ Design code	N	NBR
*	Other request	001	Further requirement in the clear text

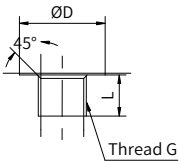
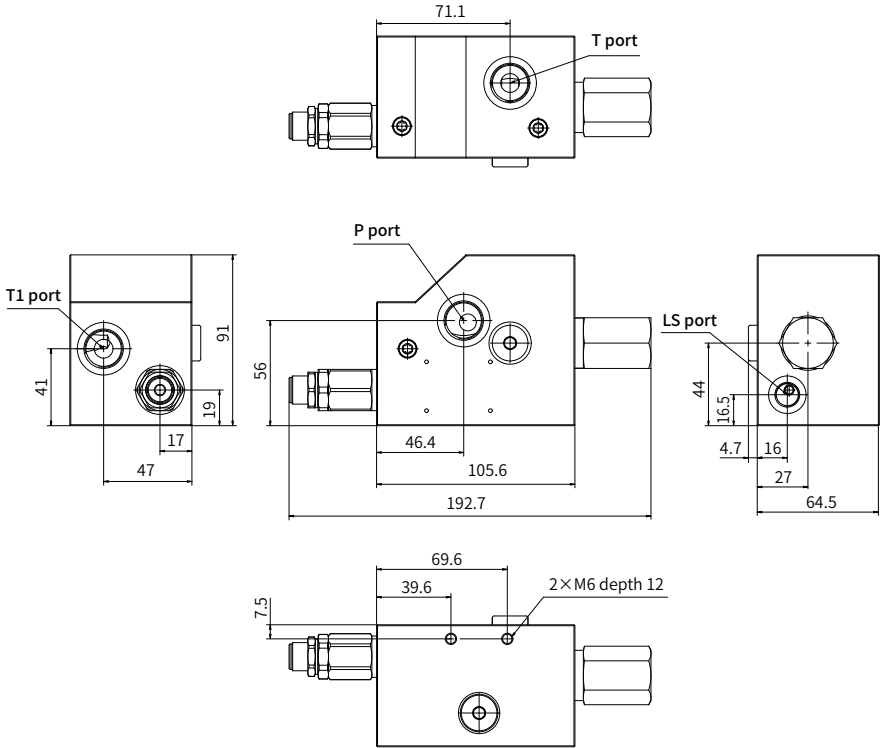
01

Hydraulic diagram



- ① Three-way flow unloading valve (suitable for quantitative pump system)
- ② LS relief valve
- ③ Main pressure relief valve (suitable for variable pump system)
- ④ LS unload valve

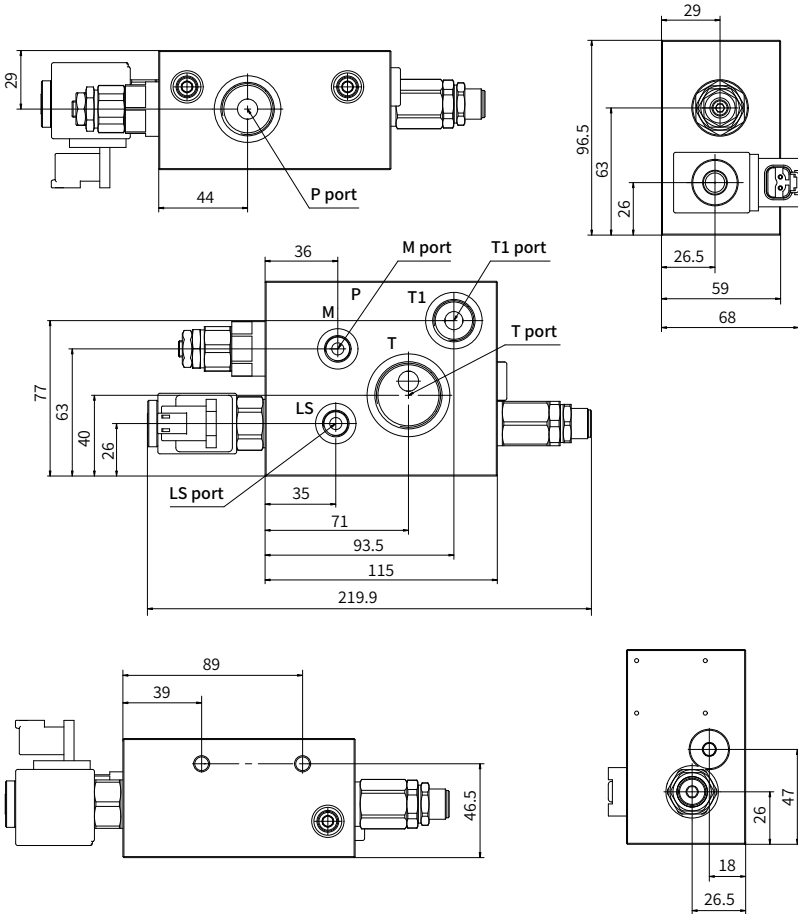
Inlet section assembly



Port dimension		Thread dimensions	
P port:	G1/2	G1/2:	Ø D 28 L 15
T, T1 port:	G1/2	G1/4:	Ø D 20 L 12.5
LS port:	G1/4		

01

Inlet section assembly-With LS solenoid operated unloading valve



Port dimension

P port:

T port:

T1 port:

LS port:

M port:

Thread dimensions

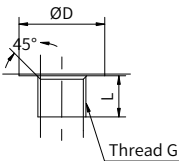
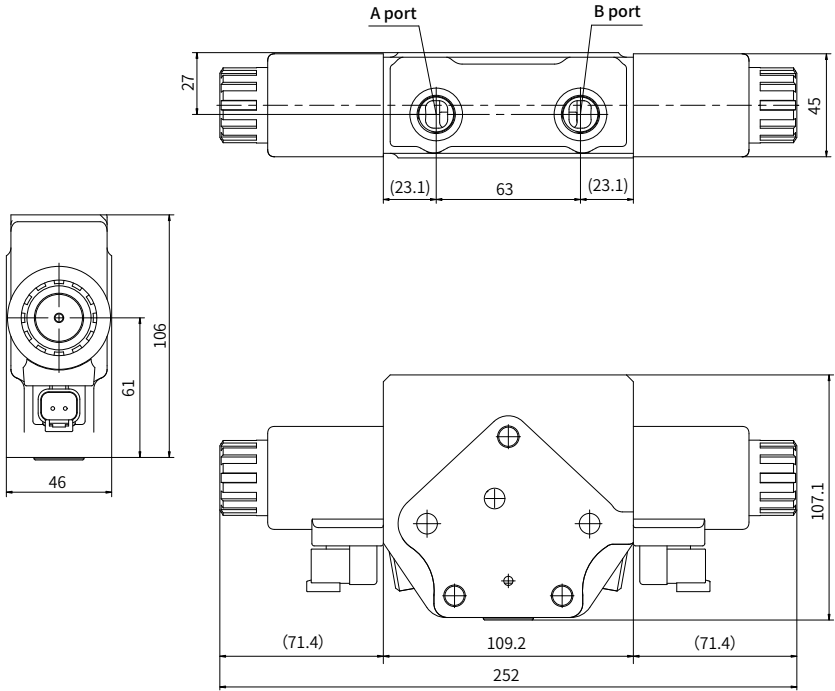
G3/4: Ø D 33 L 16.5

G1: Ø D 41 L 19

G1/2: Ø D 28 L 15

G1/4: Ø D 20 L 12.5

Middle section assembly



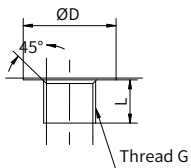
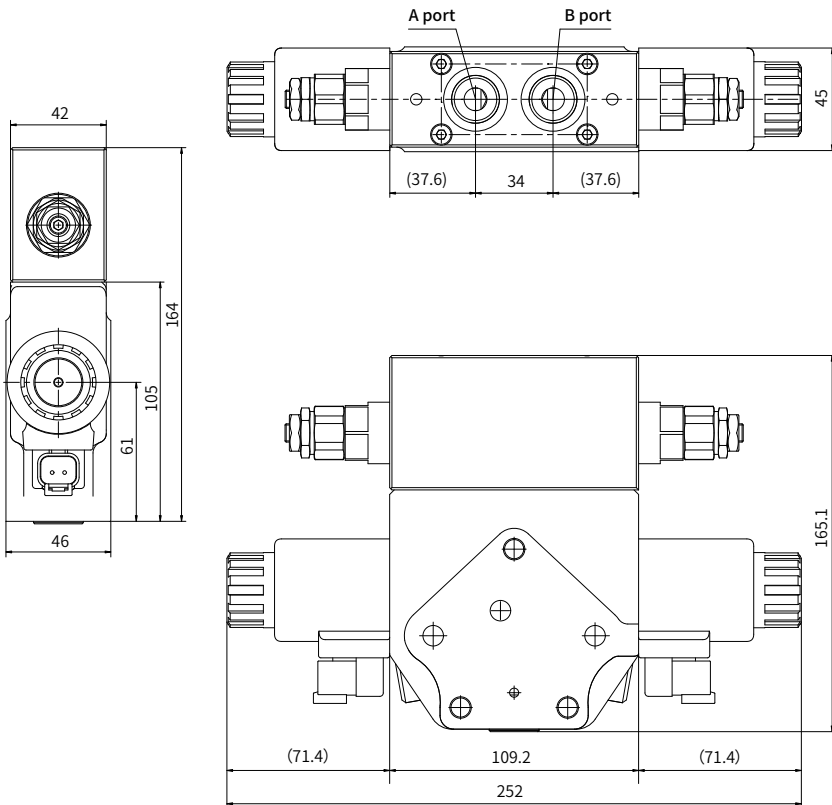
Port dimension

A/B port: G3/8
or G1/2

Thread dimensions

G3/8: Ø D 23 L 12.5
G1/4: Ø D 20 L 12.5

Middle section assembly-With relief valve



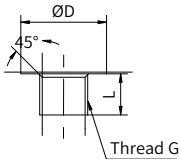
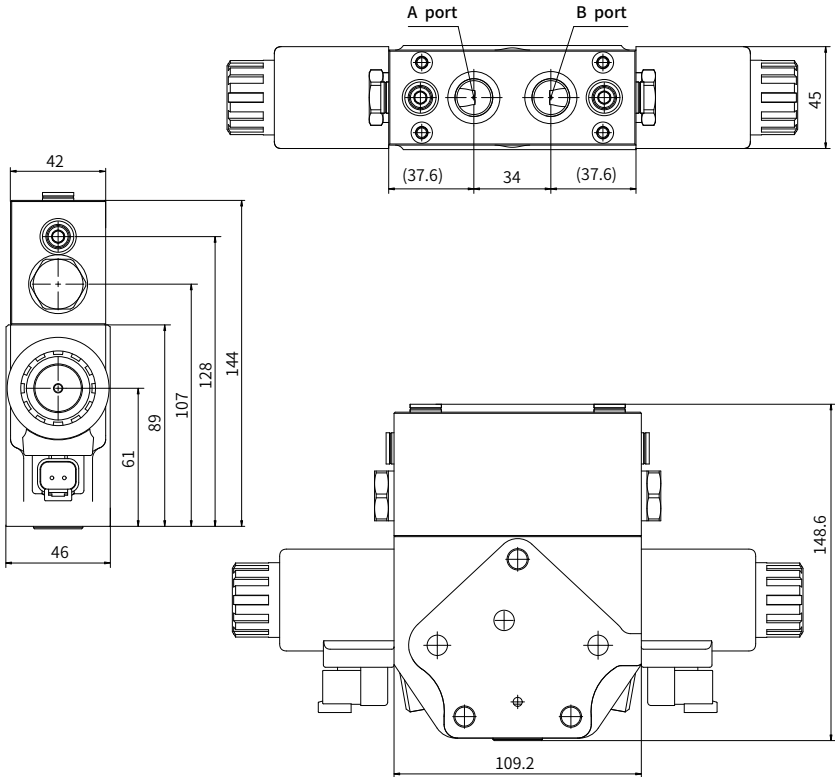
Port dimension

A/B port: G3/8
or G1/2

Thread dimensions

G3/8: Ø D 23 L 12.5
G1/2: Ø D 28 L 15

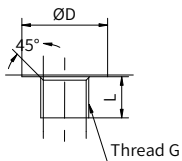
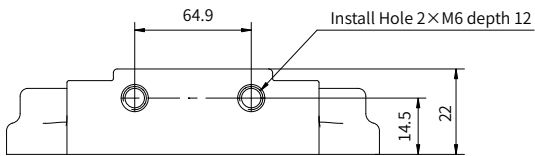
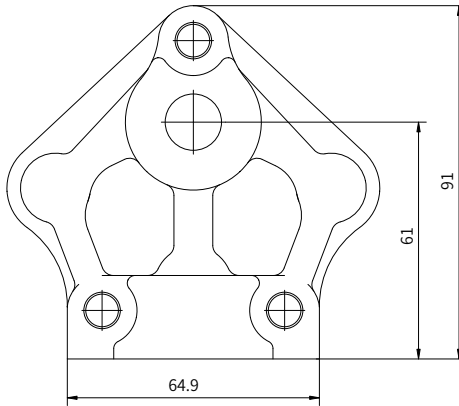
Middle section assembly-With hydraulic operated check valve



Port dimension	Thread dimensions
A/B port: G3/8	G3/8: $\varnothing D$ 23 L 12.5

01

Endlet section assembly



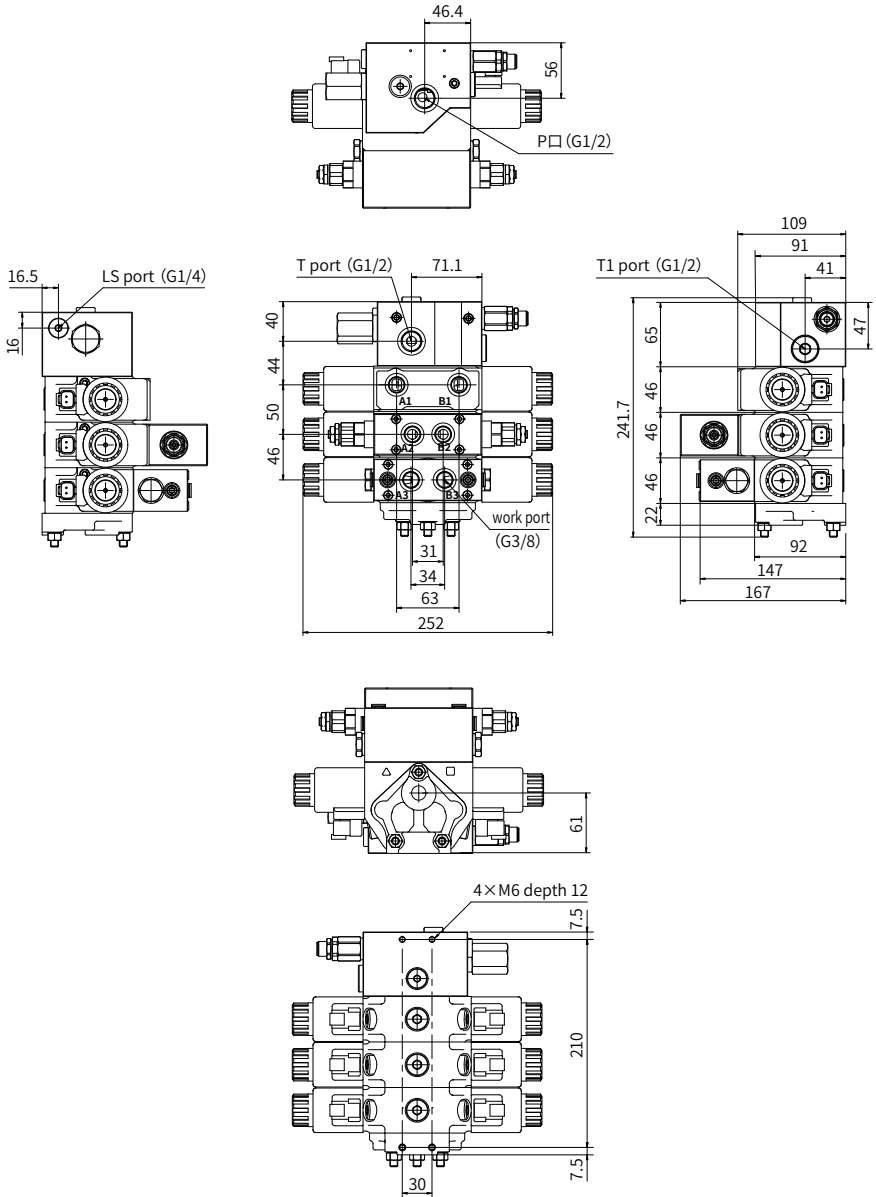
Port dimension

P port: G3/8

Thread dimensions

G3/8: $\varnothing D$ 23 L 12.5

Unit dimintions



01

China

+86 400 101 8889

America

+01 630 995 3674

Germany

+49 (30) 72088-0

Japan

+81 03 6809 1696



© This brochure can be reproduced, edited, reproduced or transmitted electronically without the authorization of Hengli Hydraulic Company. Due to the continuous development of the product, the information in this brochure is not specific to the specific conditions or applicability of the industry, thus, Hengli does not take any responsibility for any incomplete or inaccurate description.