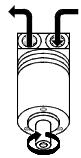
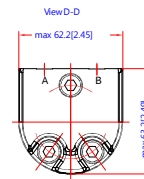
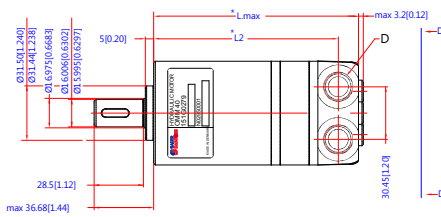
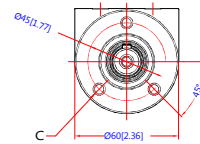
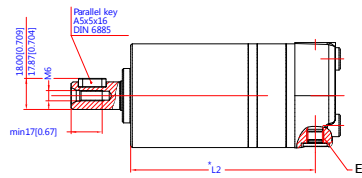


Reset

Download 3D Model



Code Number	CCM	* L _{max} mm/inch	* L ₂ mm/inch
151G0041	8	max. 107.7(4.24)	93.2(3.67)
151G0004	12.5	max. 109.7(4.32)	95.2(3.75)
151G0005	20	max. 112.7(4.44)	98.2(3.87)
151G0006	32	max. 117.7(4.64)	103.2(4.07)
151G0279	40	max. 121.2(4.78)	106.7(4.20)
151G0013	50	max. 125.7(4.95)	111.2(4.38)

Tolerance for basic dimensions = ±1 mm (0.04 inch)

C: M6 10(0.39) deep
D: G 3/8 12(0.47) deep
E: Drain connection
G 1/8 8(0.32) deep



Approved	Reason	Date	Scale	Project
-	-	-	1:1	2011.09.16
<p>Drawn by: ASJ</p> <p>Checked by: [Signature]</p> <p>Approved by: [Signature]</p>				
<p>Copyright © 2011 Danfoss AS. All rights reserved. Danfoss AS is not responsible for any damage or loss of data caused by the use of this software. The software is provided as is. Danfoss AS is not responsible for any damage or loss of data caused by the use of this software. The software is provided as is. Danfoss AS is not responsible for any damage or loss of data caused by the use of this software. The software is provided as is.</p>				
<p>SAUER DANFOSS</p>				<p>OMM</p> <p>ø16 Cyl.</p> <p>No. 8_151D0002</p>