



1.5

HVSH SERIES

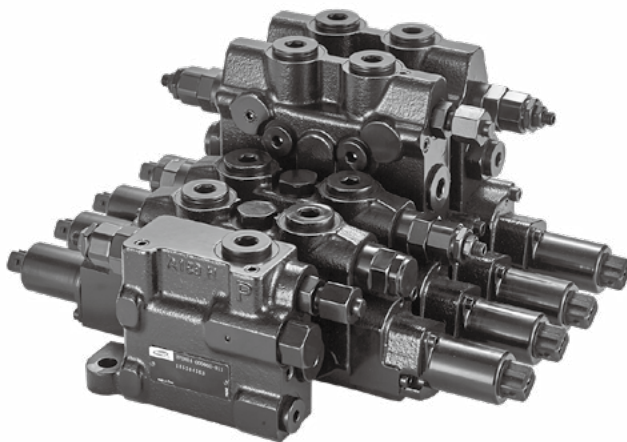
OPEN CENTER CONTROL DIRECTIONAL VALVE

HVSH :

Nominal size	14
Rated flow(L/min)	70
Max. pressure(bar)	350
Control electric voltage (VDC)	24

Benefits:

- Low pressure drop, more energy-efficient
- Sandwich plate structure, flexible adjustment
- Emergency valve, prevent misuse
- Small and light



Contents

	Page
Features	03
Section view	04
Characteristic curves	05
Hydraulic diagram	06
Ordering code	07
Unit dimensions	08
Port connection	09

Features

1. Structure

- Sandwich plate of design

2. Control

- Electro-hydraulic control

3. Applications



Hooklift



Wrecker

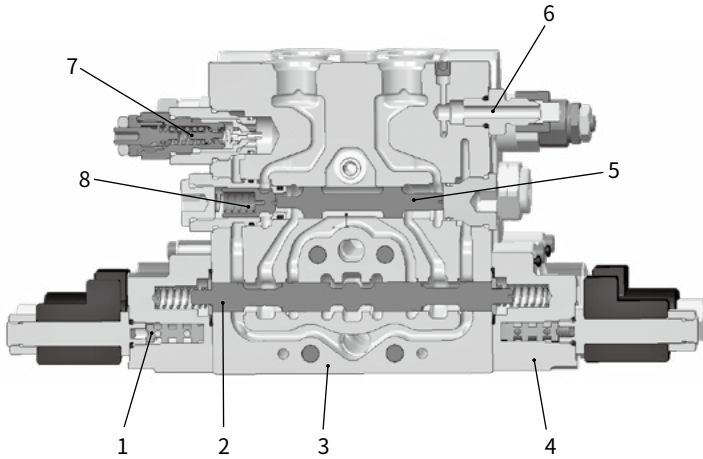


Sweeper



Compression vehicle

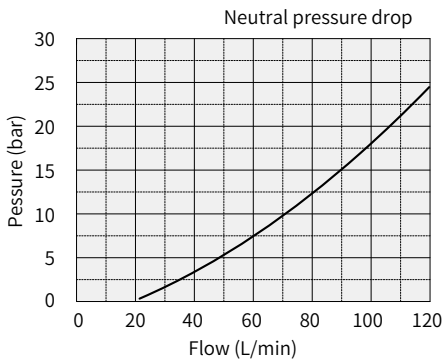
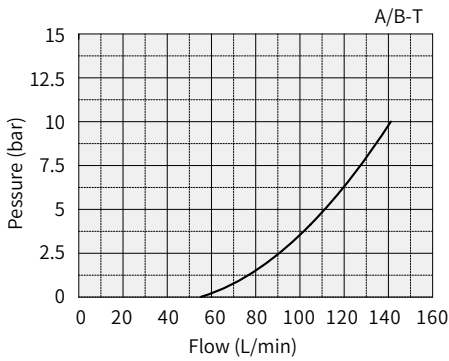
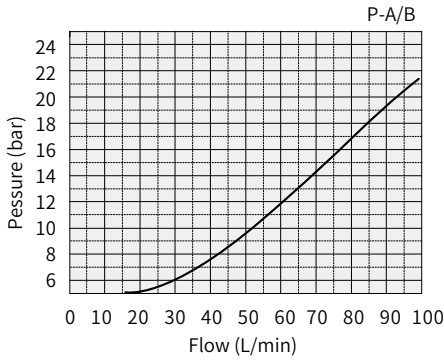
Section view



- 1 Electric control cover assembly
- 2 Spool
- 3 Valve block
- 4 Electric control cover assembly
- 5 Spool
- 6 Assembly with reserved pressure measuring port
- 7 Relief valve
- 8 Check valve

Characteristic curves

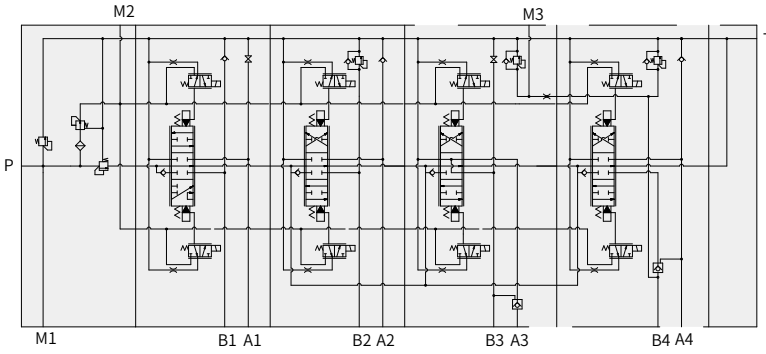
• Pressure drop characteristic curve



01

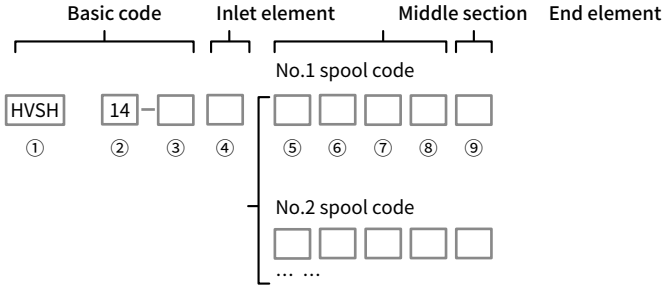
Hydraulic diagram

· Electro-hydraulic control diagram



01


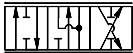
Ordering code



Ordering details: HVSH14 - 03 - 220 -

O150W
YPX
YSW

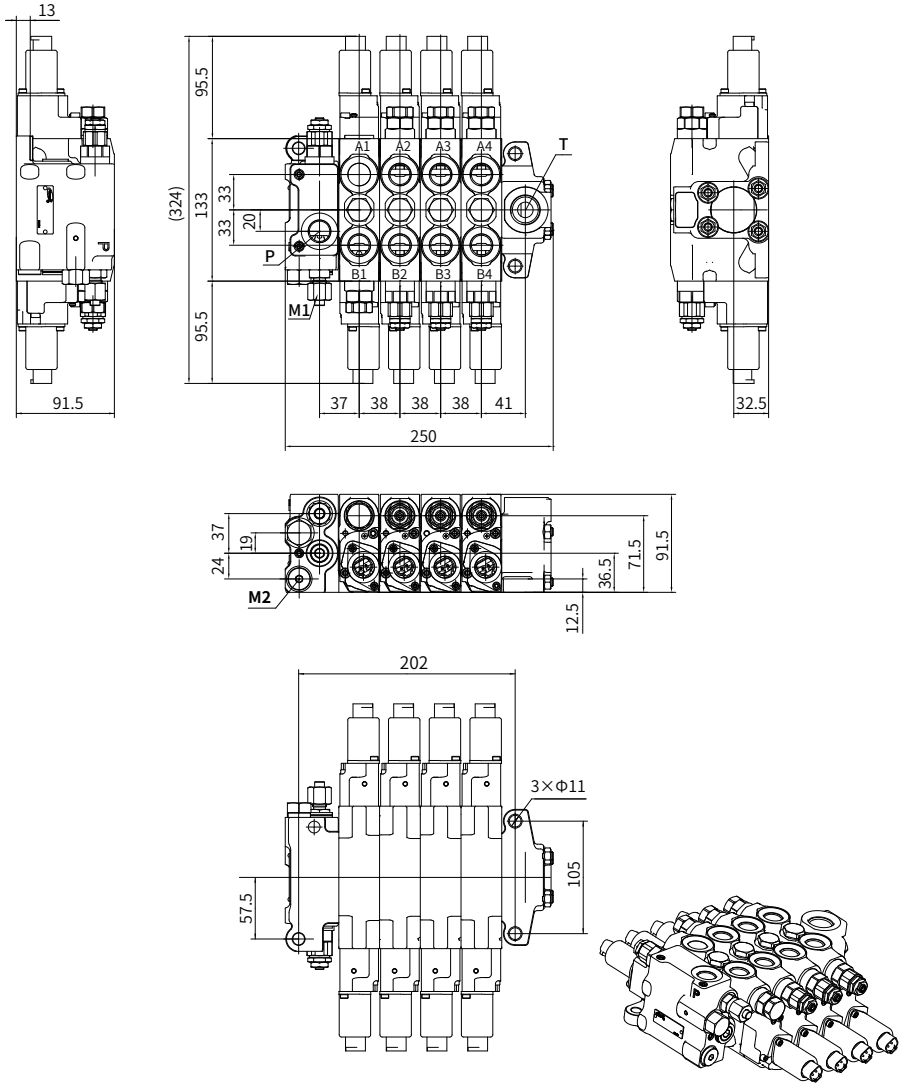
 - HN

Basic code	① Structure	HVSH	Sandwich plate design
	② Nominal size		14
	③ Number of directional middle sections		01-07
Inlet element	④ Main relief valve	P***	With main relief valve, setting pressure, 3- digits, bar
		C	Without main relief valve
Middle directional section	⑤ Spool function	O	O Type 
		Y	Y Type 
	⑥ Relief valve at A side	***	With relief valve, setting pressure, 3- digits, bar
		P	With plug
		S	With check valve
	⑦ Relief valve at B side	***	With relief valve, setting pressure, 3- digits, bar
		W	With plug
		X	With check valve
⑧ * Operation type	H	Electro-hydraulic control structure	
Endlet section	⑨ carry-over function	N	Without carry over

*Please contact us for other operation type.

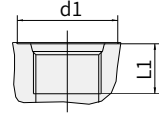
Unit dimensions

· HVSH14 Electro-hydraulic control dimension



Port connection

Port JIS B 2351		Thread	d1	L1
P	Inlet port	G1/2	34	16
T	Outlet port	G3/4	43	17
A1~A4 B1~B4	Work port	G1/2	34	16



China

+86 400 101 8889

America

+01 630 995 3674

Germany

+49 (30) 72088-0

Japan

+81 03 6809 1696



© This brochure can be reproduced, edited, reproduced or transmitted electronically without the authorization of Hengli Hydraulic Company. Due to the continuous development of the product, the information in this brochure is not specific to the specific conditions or applicability of the industry, thus, Hengli does not take any responsibility for any incomplete or inaccurate description.