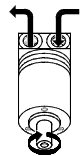
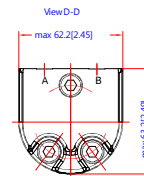
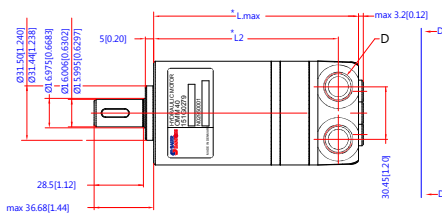
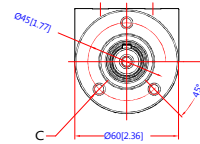
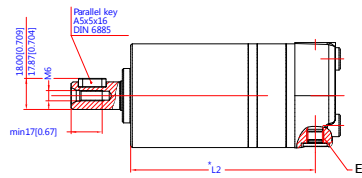


Reset

Download 3D Model



Code Number	CCM	* L _{max} mm/inch	* L ₂ mm/inch
151G0041	8	max. 107.7(4.24)	93.2(3.67)
151G0004	12.5	max. 109.7(4.32)	95.2(3.75)
151G0005	20	max. 112.7(4.44)	98.2(3.87)
151G0006	32	max. 117.7(4.64)	103.2(4.07)
151G0279	40	max. 121.2(4.78)	106.7(4.20)
151G0013	50	max. 125.7(4.95)	111.2(4.38)

Tolerance for basic dimensions = ±1 mm (0.04 inch)

C: M6 10(0.39) deep
D: G 3/8 12(0.47) deep
E: Drain connection
G 1/8 8(0.32) deep



Approved	Reason	Date	Scale	Project
			1:1	2011.09.16
			Design	ASJ

OMM
ø16 Cyl.
No. 8_151D0002

Confirmed: Approval of the drawings by the ASJ Design team for implementation in the production of the motor. The drawings are the property of Danfoss AS. The drawings are not to be used for other purposes without the written consent of Danfoss AS. The drawings are not to be used for other purposes without the written consent of Danfoss AS.