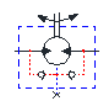


Code Number	CCM	*L _{max} mm./inch
11185537	50	137,8 [5,43]
11186671	80	142,8 [5,63]
11186674	100	142,8 [5,63]
11186655	125	146,2 [5,76]
11186658	160	150,6 [5,93]
11186665	200	156,6 [6,17]
11186667	250	163,6 [6,45]
11186652	315	172,3 [6,79]
11185531	375	179,8 [7,08]

Port connections: A, B	G1/2; min 15 [1.59] deep
Drain connection: C (Plugged with steel plug)	G1/4; 12,471 deep
Threaded connection holes D	M8; 13,511 deep
Painting	Not painted

Tolerance for basic dimensions = ±1mm (0.04 inch)



	DRIVE	BR	MC	MOTOR-ORBITAL	
	DRIVER				DRIVER
	DRIVE 1 0 1	DRIVER	DRIVER		DRIVER
CONFIDENTIAL PROPERTY OF DANFOSS (HONGKONG) S.S. DANFOS. NOT BE REPRODUCED, COPIED OR USED BY THIRD PARTY. FOR ALL DIMENSIONAL INFORMATION OR CONTACTS TO BE USED, CONTACT DANFOSS (HONGKONG) S.S. DANFOS (HONGKONG) S.S. HAS NO LIABILITY OR RESPONSIBILITY FOR POSSIBLE ERRORS OR CHANGES. DANFOSS (HONGKONG) S.S. RESERVES THE RIGHT TO ALTER PRODUCTS WITHOUT NOTICE OR PROVIDED THAT SUCH ALTERATIONS CAN BE MADE WITHOUT AFFECTING THE INTEGRITY AND PERFORMANCE OF THE PRODUCT. ANY NECESSARY SPECIFICATIONS SHOULD BE AGREED.				ITEM NUMBER	
				ED073630	